

Windows XP, Windows 7, and Windows 8 COM Port Configuration
For use with native serial ports (non-USB) and
CPU Terminal Programs

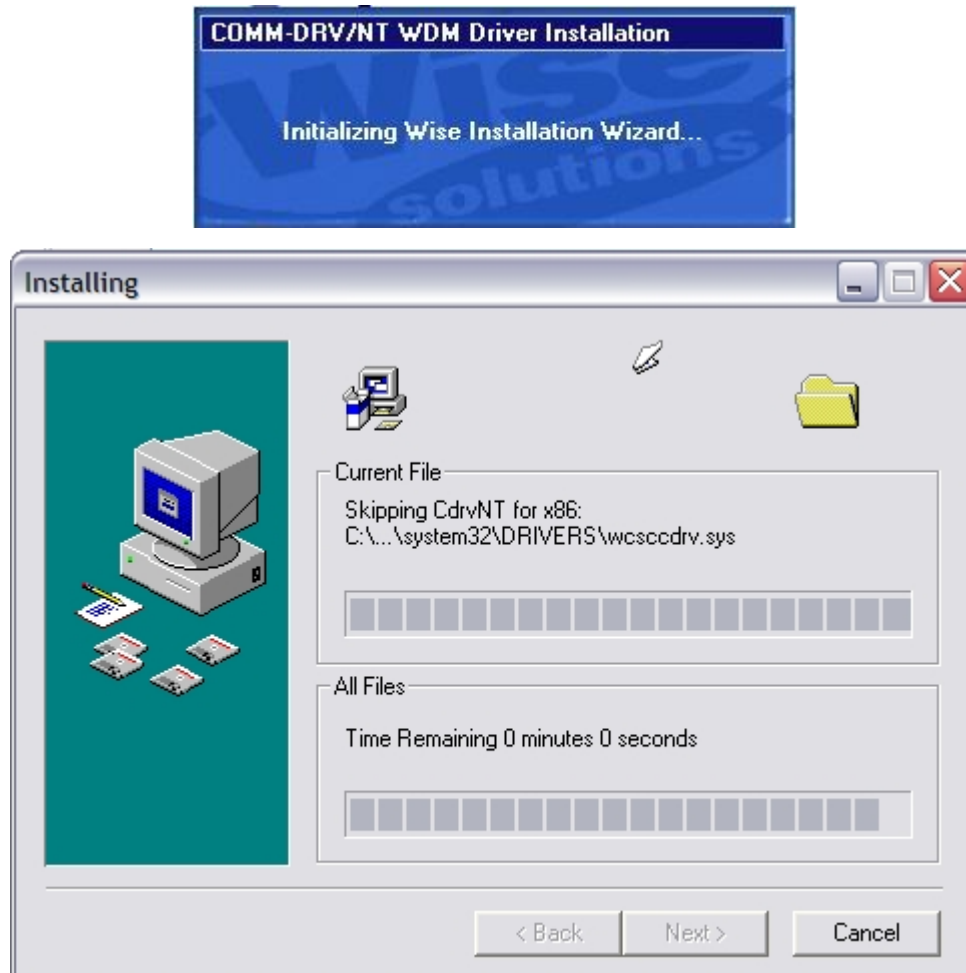
Computers using Windows XP, Windows 7, or Windows 8 must have the serial port configured as outline in the following instructions for direct connection and programming with a native serial port. The CPU-2000 requires the unit to be programmed with this native serial port. The CPU-95(EVS) Terminal Program allows a choice to program directly with a native serial port (of which this document applies to), or to program the unit via the CPU-95 Enhanced Display (791909-1) which has provisions to program it via a USB connection from the computer to the display. USB drivers and their Com port settings are contained in a separate document.

If you have installed the old version of the SERNEW driver on this current PC, please uninstall before attempting to precede the following steps.

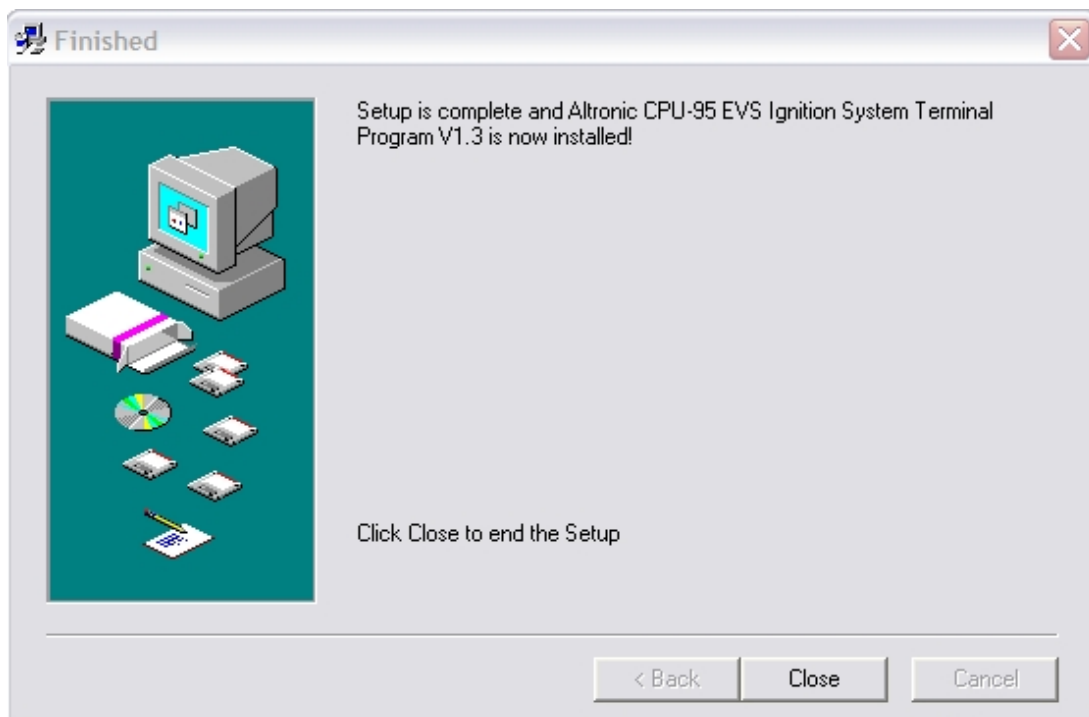
1) Installation of Altronic Terminal Program requires “Administrative Privilege”. If you have the autorun selection enabled on your CD-ROM drive, cancel it out. Navigate to your **CD-ROM** drive and run the **SetupCPU95EVS-Vxx.exe** as Administrator. For **Windows™ XP**, right click on the **SetupCPU95EVS-Vxx.exe** file, select “Run As...”, select the Administrator account and provide the password. For **Windows™ 7 and Windows™ 8**, right click on the **SetupCPU95EVS-Vxx.exe** file, select “**Run As Administrator**” to start the installation.

2) The new SERNEW driver, COMM-DRV/NT WDM Driver Package, CdrvNTWDMDriverInstall.EXE, is now automatically installed as part of the main CPU Terminal Program Installation.

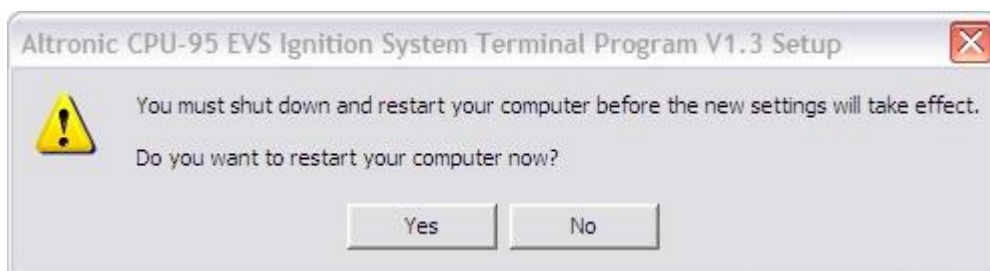
When the driver package opens, the following screens will appear.



3) Click Close to finish the Altronic CPU-95EVS Vx.x Terminal Program,



4) The system must be restarted to complete the installation. Press Yes button to restart this computer.



TROUBLESHOOTING:

The pre-configured **CdrvNTWDMOptions.ini** file is used to describe the serial device that the user will be using with COMM-DRV/NT WDM Driver Package. **CdrvNTWDMOptions.ini** allows for configuring the default behavior of the CdrvNT Driver Install utility. The install utility will correctly detect the target operating system and install and configure the proper kernel mode driver. If you need to alter the installers default behavior place this file in the same directory as the installer with your changes. The file has two sections, the [GENERAL] section and the [DEVICE] Configuration section. The preconfigured file, CdrvNTWDMOptions.ini can be found in the install directory of the CdrvNTWDMDriverInstall.EXE installation, **C:\Program Files\Altronic CPU-95 EVS Ignition System Terminal Program Vx.x\CdrvNTWDM_Distribute**. The preconfigured CdrvNTWDMOptions.ini file has the following devices configuration pre-defined.

```
#####
; DEVICE CONFIGURATION
#####
***ALTRONIC USERS SELECTED ADDRESS/IRQ ***
[DEVICE1]
;COM1
ADDRESS=3F8
IRQ=4
***ALTRONIC USERS SELECTED ADDRESS/IRQ ***
[DEVICE2]
;COM2
ADDRESS=2F8
IRQ=3
***ALTRONIC USERS SELECTED ADDRESS/IRQ ***
[DEVICE3]
;COM3
ADDRESS=3E8
IRQ=4
***ALTRONIC USERS SELECTED ADDRESS/IRQ ***
[DEVICE4]
;COM4
ADDRESS=2E8
IRQ=3
```

Once the user reboots his/her laptop, the **new SERNEW Driver no longer appears under the Driver tab in the Device Manager.**



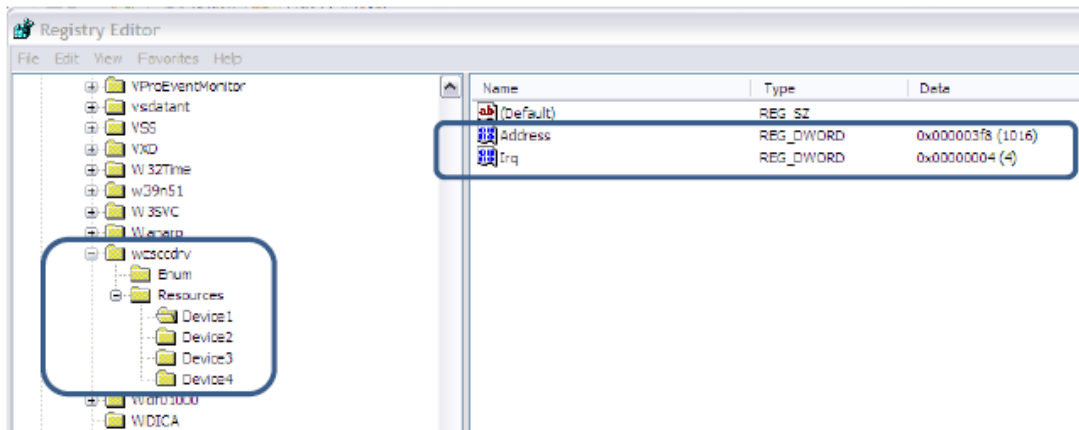
To verify that the new SERNEW Driver, COMM-DRV/NT WDM, was properly installed, please follow these instructions.

- 1) Open command prompt as Administrator, type in "**Regedit**", and Enter.

2) Navigate to

HKEY_LOCAL_MACHINE\SYSTEM\CurrentControlSet\Services\wcscddrv\Resources

Device1, Device2, Device3, and Device4 folders should appear under Resources folder as shown below.



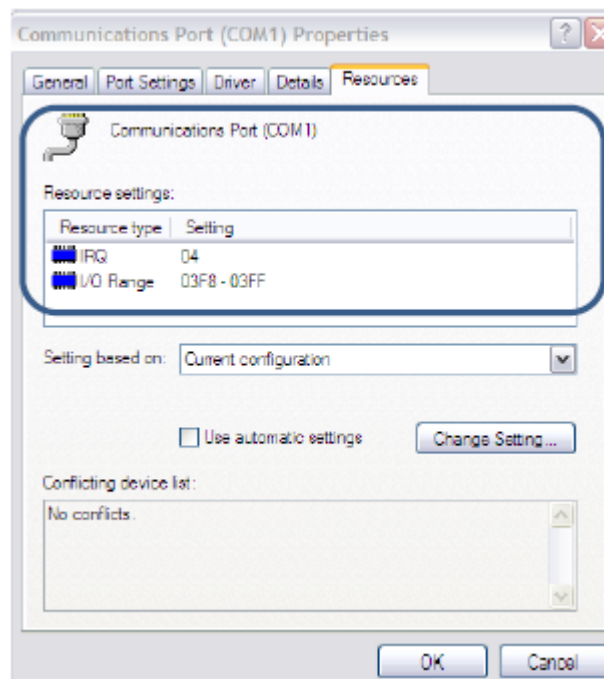
3) If the user navigates to each Device folder, the Address and IRQ should be defined according to the DEVICE CONFIGURATION section on Page 4.

Example;

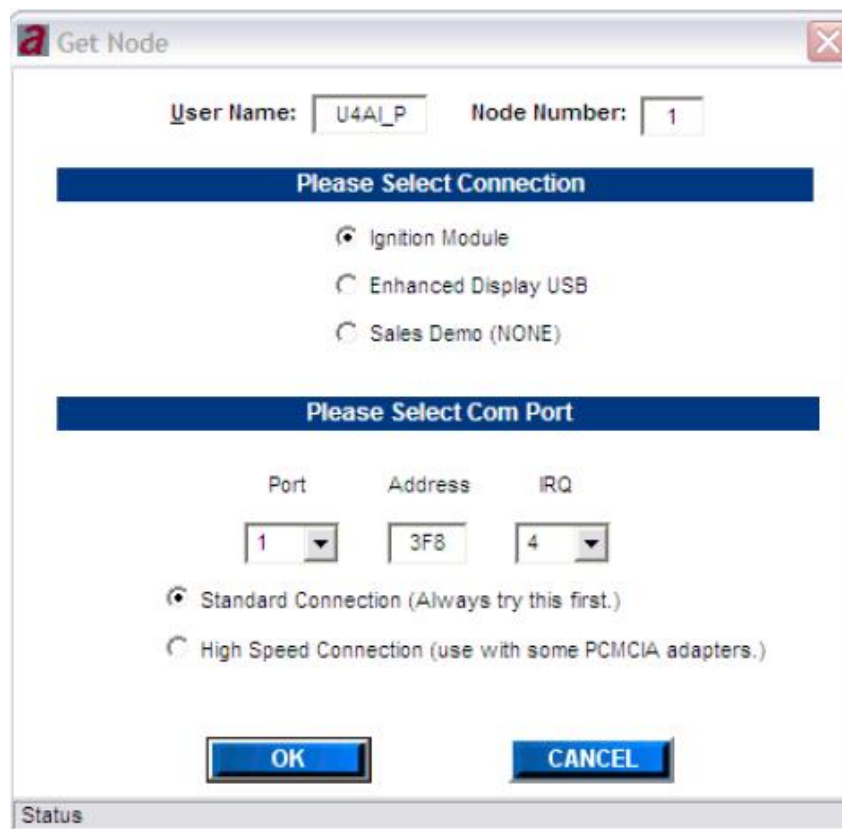
If **COM 1** was configured for the New SERNEW Driver,

The properties of COM1 should be set as shown below on **Resources** tab in

Device Manage



To communicate to CPU-95EVS Ignition Module using the CPU-95EVS Terminal Program, the User will then select Ignition Mode and select Com port to 1, Address to 3F8, and IRQ to 4 and Select OK to establish the 9-bits communication.



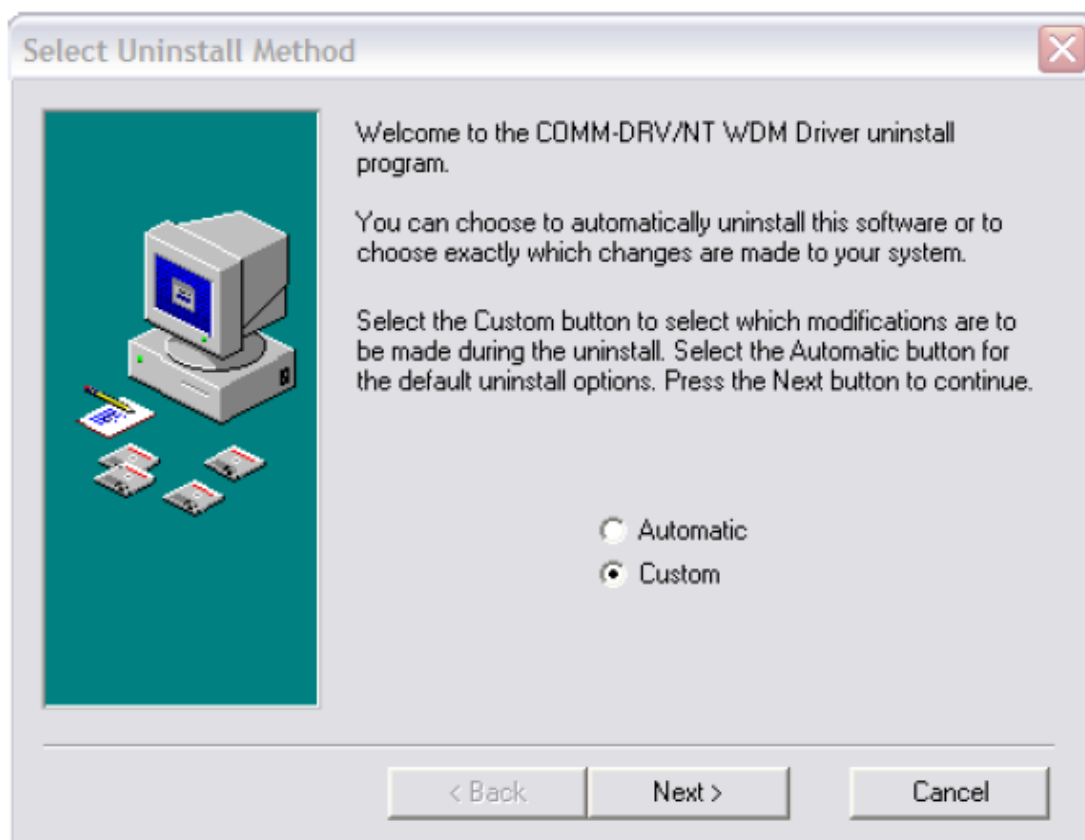
Driver Package **Uninstallation**

To Remove the COMM-DRV/NT WDM Driver Package, please follow these steps:

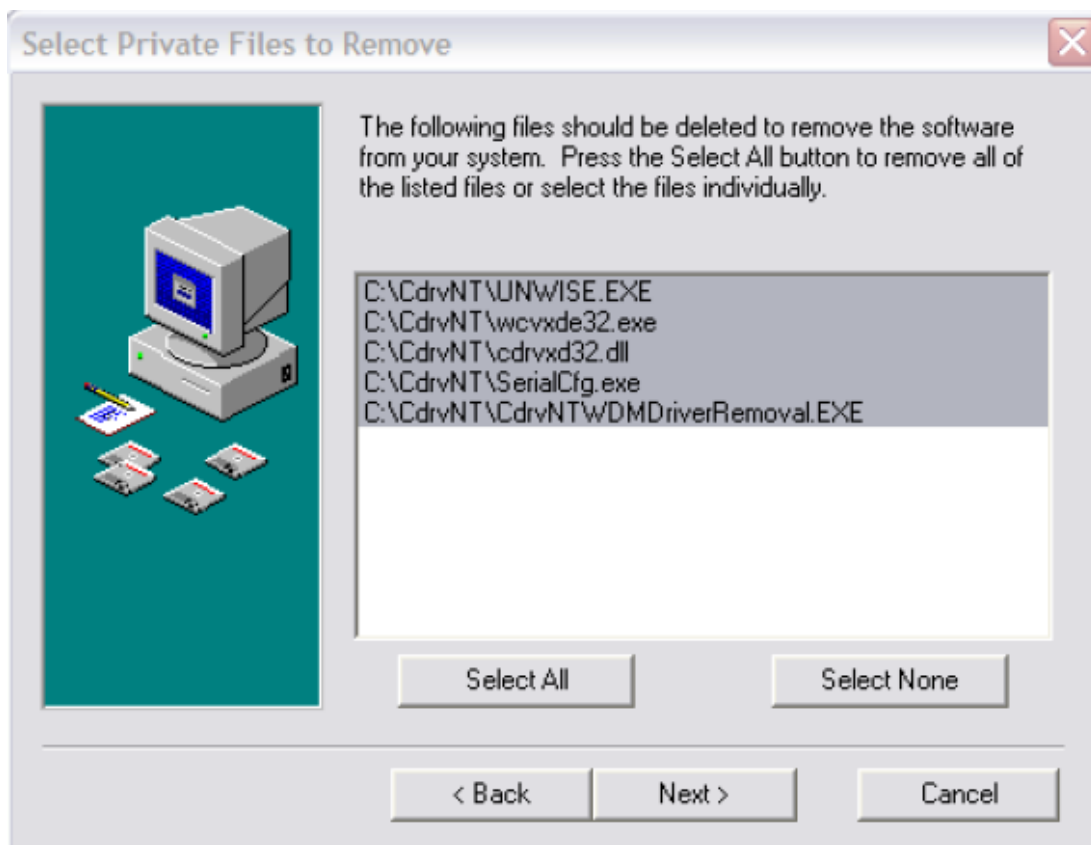
- 1) Initiate the **Add or Remove Programs** with **Administrator Privilege**
- 2) Navigate to **COMM-DRV/NT WDM Driver** and Click on **Change/Remove button**



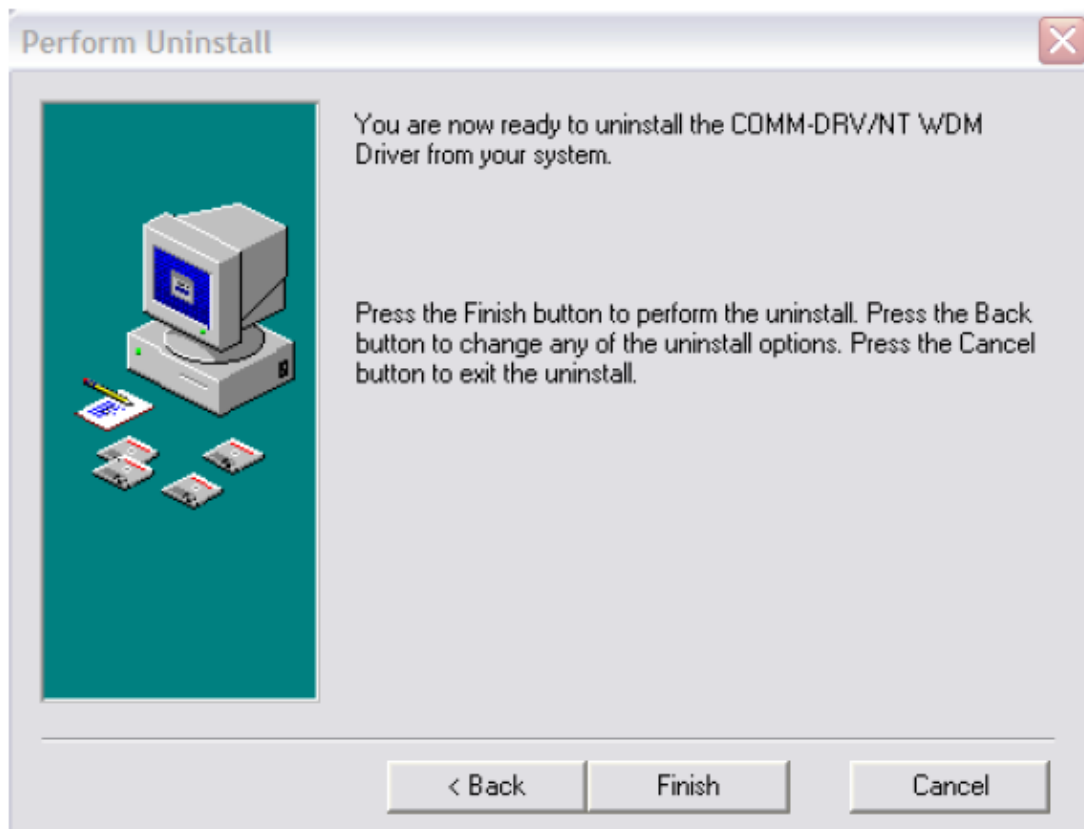
- 3) Click Custom Uninstallation, and Next



4) Click on Select All, and Next till the end of uninstallation process



5) Click Finish button to perform the Uninstallation



6) Reboot the PC to complete the uninstallation process.