

Alabama Gas

LOCATION:

Coosada, AL

APPLICATION:

Panel upgrade

ENGINE/COMPRESSOR:

Ingersoll-Rand SVS-612

DISTRIBUTOR/REP:

Sulzer Turbo Services
Michael Porter

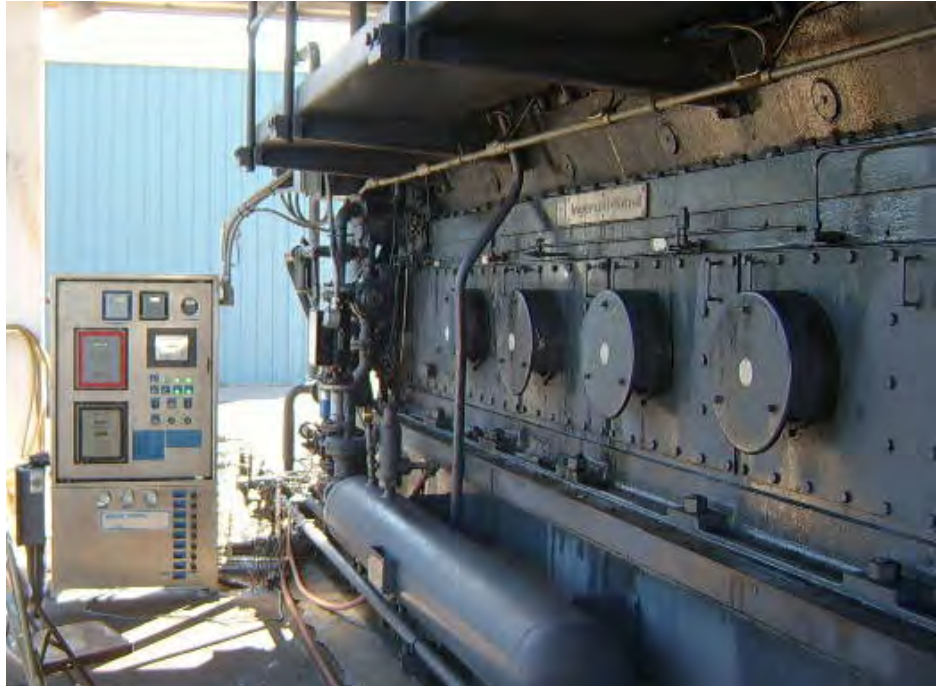
ALTRONIC PRODUCTS:

ETM
DE-3000
VSM
CPU-2000
GOV-10

OVERVIEW:

Sulzer had ACI build a control panel that would completely control the I/R engine. They installed a GOV-10 to control the speed and added an ETM (to keep track of the temperatures), a CPU-2000 (to operate the ignition timing) and a DE-3000 (to keep track of the pressures and control the exhaust temperature by controlling the waste gate with one of its PID loops). A VSM was added later to monitor vibrations on the cooling fans, engine and compressor frame. The whole process was brought together with a touch screen to make viewing the system easier.

Alabama Gas was having problems with the unit shutting down on vibrations when the new panel was first installed. This was because



of the old air-operated vibration switches. They decided to replace the old system with the Altronic VSM monitor. They also updated the waste gate controller with a cable-driven Moore that is controlled by the PID loop on the DE-3000.

Using the DE-3000 PID loop to control the exhaust temperatures automatically made it much easier to control the air/fuel ratio on the engine. Before the addition of the DE-3000 the exhaust temperature was controlled manually. Adjustments had to be made by the operators throughout their shift.

Alabama Gas likes the quality of the Altronic equipment, along with the reliability of Sulzer service,

they have an elect driven compressor that they will upgrade with a new panel in the near future.

Asked for a comment, the customer said, "I was very surprised by how easily the engine started. You just have to press one button and the panel does the rest."

