

**ALTRONIC III  
MEDIUM ENGINES, 2-16 CYLINDERS**

**APPLICATION LIST  
FORM AIII AL 12-95**

**REQUIRED ITEMS:**

- A) ALTRONIC III UNIT - See listing and Identification section.
- B) WIRING HARNESS - See listing and Identification section.
- C) IGNITION COILS - unshielded, 1 per spark plug:
  - 501 061 - standard
  - 591 010 - long duration
  - 591 040 - long duration (plastic case)
- D) DRIVE PARTS - Use one per Altronic III unit where required:
  - 560 001 - drive member for base mount installations
  - 510 221 - shaft extension required for some applications (note 5)

**OPTIONAL ITEMS:**

- E) ELECTRONIC TIMING - See Application Options.
- F) SHIELDED SYSTEM - See Application Options.
- G) ALTRONIC DIGITAL INSTRUMENTS - Annunciator, Tachometer, Hourmeter, Overspeed Trip, Timing Indicator, Pyrometer, Temperature and Pressure Switch & Gauge - see form ADI-C.
- H) MURPHY PANEL/FUEL VALVE ADAPTOR - 501 213.

ENGINE / MODEL NO.	DRIVE RATIO	ROTA-TION	ALTRONIC III UNIT NO.	WIRING HARNESS	QTY. COILS	NOTES
<b>AJAX</b>						
DPC-80-A	2:1	CW	2A29H-A	393 013-3	2	S,H
DPC-105	2:1	CW	2A29H-A	393 013-3	2	S,H
DPC-115	2:1	CW	2A29H-A	393 013-3	2	S,H
DPC-140	2:1	CW	2A29H-A	393 013-3	2	S,H
DPC-160-A	2:1	CW	2A29H-A	393 013-3	4	S,H
DPC-180	2:1	CW	2A29H-A	393 013-3	2	S,H
DPC-230	2:1	CW	2A29H-A	393 013-3	4	S,H
DPC-280	2:1	CW	2A29H-A	393 013-3	4	S,H
DPC-300	2:1	CW	2A29H-A	393 013-3	4	S,H
DPC-360	2:1	CW	2A29H-A	393 013-3	4	S,H
DPC-540	2:1	CW	3A29H-A	393 013-3	6	S,H
DPC-600	2:1	CW	3A29H-A	393 013-3	6	S,H
DPC-800	2:1	CW	4A29H-A	393 013-9	8	S,H

**ARIEL**

325JGS	1/2:1	CW	2A19H-GV	393 013-10	4	S,H
--------	-------	----	----------	------------	---	-----

**BUDA**

6MO Series	1-1/2:1	CCW/CW	6A39H-G	393 023-1	6	S,H
8MO Series	1:1	CW	8A29H-D	393 018-1	8	S,H
PC-2505	1:1	CW	8A29H-D	393 018-1	8	S,H

**ALTRONIC III  
MEDIUM ENGINES, 2-16 CYLINDERS**

**APPLICATION LIST  
FORM AIII AL 12-95**

ENGINE / MODEL NO.	DRIVE RATIO	ROTA-TION	ALTRONIC III UNIT NO.	WIRING HARNESS	QTY. COILS	NOTES	
<b>CATERPILLAR</b>							
G333	1-1/2:1	CW	6A39H-A	393 023-1	6	S,H	
G342	1-1/2:1	CCW/CW	6A39H-A	393 023-2	6	S,H	
G343	1-1/2:1	CCW/CW	6A39H-G	393 023-1	6	S,H	
G353	1-1/2:1	CCW	6A39H-A	393 023-2	6	S,H	
G379 (side mount)	1:1	CCW	8T25H-A	393 018-1	8	D,H,2	
G379 (side mount)	1:1	CCW	8B25H-G	393 018-1	8	D,H,1,2	
G379 (between "V")	1:1	CW	8B25H-A	393 018-1	8	D,H	
G398 (side mount)	1-1/2:1	CCW	12A33H-A	393 018-2	12	D,H	
G398 (between "V")	1-1/2:1	CW	12A33H-A	393 018-2	12	D,H	
G399	1:1	CCW	16B21H-A	393 022-1	16	D,H,11	
G399	1:1	CCW	8B13H-G	393 018-1	16	D,H,11	
G399 (2 units)	1:1	CCW	8A25H-G	393 018-1	16	D,H,22	
G3304	1:1	CCW	4A29H-A	393 023-1	4	S,H,24	
G3304	1-1/2:1	CCW	4A39H-A	393 023-1	4	S,H,24	
G3306	1-1/2:1	CCW	6A39H-A	393 023-1	6	S,H	
G3406	1:1	CW	6A29H-AO	393 023-1	6	S,H	
G3408	1:1	CCW	8A23H-GO	393 018-1	8	D,H	
G3412	1:1	CCW	12P21H-GO	393 018-2	12	D,H	
G3508	1:1	CW	8A23HT-J	393 018-1	8	D,H,T	
G3512	1:1	CW	12A23HT-J	393 018-2	12	D,H,T	
G3516	1:1	CW	16T21HT-J	393 022-1	16	D,H,T	
G3606	2:1	CCW	6A46HT-J-SI	393 018-1	6	S,H,T	
G3608	2:1	CCW	8A45HT-J-SI	393 018-1	8	D,H,T	
G3612	2:1	CW	12V45HT-J-S2	393 018-2	12	D,H,T	
G3616	2:1	CW	16V43HT-J-S2	393 022-1	16	D,H,T	
<b>CLARK</b>							
BA, HBA, HLA	- 5	2-1/2:1	CCW	5A59H-BEL	393 023-2	10	S,H,3,5,16
	- 6	3:1	CCW	6A39H-BEL	393 023-2	12	S,H,3,5,16
	- 8	2:1	CCW	8C25H-BEL	393 018-1	16	D,H,1,3,5,16
	- 10	2-1/2:1	CCW	10A53H-BEL	393 018-2	20	D,H,3,5,16
HMC	- 10	1:1	CCW	10A11H-G	393 018-2	20	D,H,16
MA,HMA,HMB,TMB	- 4	2:1	CCW	4A29H-BEL	393 023-2	4,8	S,H,3,5,16
	- 6	3:1	CCW	6A39H-BEL	393 023-2	6,12	S,H,3,5,16
	- 8	2:1	CCW	8C25H-BEL	393 018-1	8,16	D,H,3,5,16
	- 10	2-1/2:1	CCW	10A53H-BEL	393 018-2	10,20	D,H,3,5,16

CLARK LISTING CONTINUED ON NEXT PAGE

**ALTRONIC III  
MEDIUM ENGINES, 2-16 CYLINDERS**

**APPLICATION LIST  
FORM AIII AL 12-95**

ENGINE / MODEL NO.	DRIVE RATIO	ROTA-TION	ALTRONIC III UNIT NO.	WIRING HARNESS	QTY. COILS	NOTES
<b>CLARK (CONTINUED)</b>						
RA, HRA - 32	1-1/2:1	CW	6A39H-BEL	393 023-2	6	S,H,1,3,5,16
- 4	2:1	CW	4A29H-BEL	393 023-2	8	S,H,3,5,16
- 5	2-1/2:1	CW	5A59H-BEL	393 023-2	10	S,H,3,5,16
- 6	3:1	CW	6A39H-BEL	393 023-2	12	S,H,3,5,16
- 8	2:1	CW	8A25H-BEL	393 018-1	16	D,H,3,5,16
TVM - 10	2-1/2:1	CW	10T53H-BEL	393 018-2	20	D,H,5,16
- 12	3:1	CW	12T33H-BEL	393 018-2	24	D,H,5,16
VMC - 12	2:1	CW	12T23H-G	393 018-2	24	D,H,16
(2 units) - 12	2:1	CW	6A29H-G	393 023-2	24	S,H,16,22

**CLIMAX**

H-2470	1:1	CW	8B25H-A	393 018-1	8	D,H
K-67	1-1/2:1	CW	6A39H-A	393 023-1	6	S,H
K-75	1-1/2:1	CW	6A39H-A	393 023-1	6	S,H
L-3230	1-1/2:1	CW	12A33H-A	393 018-2	12	D,H
L-3711	1-1/2:1	CW	12A33H-A	393 018-2	12	D,H
V-80	1:1	CW	8B25H-BEL	393 018-1	8	D,H
V-85	1:1	CW	8B25H-A	393 018-1	8	D,H
V-120	1-1/2:1	CW	12A33H-BEL	393 018-2	12	D,H
V-122	1-1/2:1	CW	12A33H-G	393 018-2	12	D,H
V-125	1-1/2:1	CW	12A33H-G	393 018-2	12	D,H

**COOPER BESSEMER**

GMV (short stroke) - 4	2:1	CW	4F29H-BEL	393 023-2	4	S,H,3,5,16
- 6	3:1	CW	6F39H-BEL	393 023-2	6	S,H,3,5,6,16
- 6	1-1/2:1	CW	6F69H-BEL	393 023-2	6	S,H,3,5,6,16
- 8	2:1	CW	8F29H-BEL	393 018-1	8	D,H,3,5,16
GMV, GMVA - 4	2:1	CCW	6A29H-BEL	393 023-2	6	S,H,1,3,5,16
- 6	3:1	CCW	6A39H-BEL	393 023-2	6	S,H,3,5,6,16
- 6	1-1/2:1	CCW	6A69H-BEL	393 023-2	6	S,H,3,5,6,16
- 8	2:1	CCW	8B25H-BEL	393 018-1	8	D,H,3,5,16
GMX Series - 4	2:1	CW	4F29H-BEL	393 023-2	4	S,H,3,5,16
- 6	3:1	CW	6F39H-BEL	393 023-2	6	S,H,3,5,16
- 8	2:1	CW	8F25H-BEL	393 018-1	8	D,H,3,5,16
Horizontal (TTDA)- Type 19	1-1/2:1	CCW/CW	8A39H-G	393 018-1	16	S,H,15
- Type 22	1-1/2:1	CCW/CW	8A39H-G	393 018-1	16	S,H,15
- Type 26	1-1/2:1	CCW/CW	8A39H-G	393 018-1	16	S,H,15

**ALTRONIC III  
MEDIUM ENGINES, 2-16 CYLINDERS**

**APPLICATION LIST  
FORM AIII AL 12-95**

ENGINE / MODEL NO.	DRIVE RATIO	ROTA-TION	ALTRONIC III UNIT NO.	WIRING HARNESS	QTY. COILS	NOTES	
<b>CUMMINS</b>							
G-495	1:1	CW	4A29H-D	393 023-1	4	S,H	
G-743	1:1	CW	6A29H-D	393 023-1	6	S,H	
G-855	1:1	CW	6A29H-D	393 023-1	6	S,H	
G-1150	1:1	CW	6A29H-D	393 023-1	6	S,H	
G-1710	1:1	CCW	12Z21H-D	393 018-2	12	D,H,14	
G-1710	1:1	CCW	6Z13H-D	393 018-1	12	D,H,14	
GNH-220	1:1	CW	6A29H-D	393 023-1	6	S,H	
GNH-250	1:1	CW	6A29H-D	393 023-1	6	S,H	
GNHC-4	1:1	CW	4A29H-D	393 023-1	4	S,H	
GT-743	1:1	CW	6A29H-D	393 023-1	6	S,H	
GT-855	1:1	CW	6A29H-D	393 023-1	6	S,H	
GT-1710	1:1	CCW	12Z21H-D	393 018-2	12	D,H	
GTA-743	1:1	CW	6A29H-D	393 023-1	6	S,H	
GTA-855	1:1	CW	6A29H-D	393 023-1	6	S,H	
GTA-1150	1:1	CW	6A29H-D	393 023-1	6	S,H	
GTA-1710	1:1	CCW	12Z21H-D	393 018-2	12	D,H	
<b>DEUTZ</b>							
GF8L413F	1/2:1	CCW	8A11H-GV	393 018-1	8	D,H	
GF10L413F	1/2:1	CCW	10H11H-GV	393 018-2	10	D,H	
GF12L413F	1/2:1	CCW	12B11H-GV	393 018-2	12	D,H	
<b>DORMAN</b>							
6SETCWG	1:1	CCW	6A29HT-G	393 023-1	6	S,H,T	
8SETCWG	1:1	CCW	8A23HT-G	393 018-1	8	D,H,T	
12STCWG	1-1/4:1	CCW	12E53H-G	393 018-2	12	D,H	
<b>INGERSOLL RAND</b>							
JVG	- 4	1:1	CW	4G29H-BEL	393 023-2	4	S,H,5
	- 6	1-1/2:1	CW	6B39H-BEL	393 023-2	6	S,H,5
	- 8	1:1	CW	8G29H-BEL	393 018-1	8	S,H,4,5
	- 8	2:1	CW	8G49H-BEL	393 018-1	8	S,H,4,5

INGERSOLL RAND LISTING CONTINUED ON NEXT PAGE

**ALTRONIC III  
MEDIUM ENGINES, 2-16 CYLINDERS**

**APPLICATION LIST  
FORM AIII AL 12-95**

ENGINE / MODEL NO.	DRIVE RATIO	ROTA-TION	ALTRONIC III UNIT NO.	WIRING HARNESS	QTY. COILS	NOTES
<b>INGERSOLL RAND (CONTINUED)</b>						
KVG	- 26	1-1/2:1	CW	6C39H-BEL	393 023-2	6 S,H,5
	- 48	1:1	CW	8E29H-BEL	393 018-1	8 S,H,4,5
	- 48	2:1	CW	8E49H-BEL	393 018-1	8 S,H,4,5
	- 62	1-1/2:1	CW	6C39H-BEL	393 023-2	6 S,H,5
	- 82	1:1	CW	8H29H-BEL	393 018-1	8 S,H,5
	- 83	1:1	CW	8E29H-BEL	393 018-1	8 S,H,4,5
	- 83	2:1	CW	8E49H-BEL	393 018-1	8 S,H,4,5
	- 103	1-1/4:1	CW	10E55H-BEL	393 018-2	10 D,H,5
	- 104	1-1/4:1	CW	10E55H-BEL	393 018-2	10 D,H,5
	- 123	1-1/2:1	CW	12H35H-BEL	393 018-2	12 D,H,5
	- 410	1-1/4:1	CW	10E55H-BEL	393 018-2	10 D,H,5
	- 412	1-1/2:1	CW	12H35H-BEL	393 018-2	12 D,H,5
	- 512	1-1/2:1	CW	12H35H-BEL	393 018-2	12 D,H,5
PJVG	- 6	1-1/2:1	CW	6B39H-BEL	393 023-2	6 S,H,5
	- 8	1:1	CW	8B29H-BEL	393 018-1	8 S,H,5
PKVG	- 6	1-1/2:1	CW	6C39H-BEL	393 023-2	6 S,H,5
	- 8	1:1	CW	8E29H-BEL	393 018-1	8 S,H,4,5
	- 8	2:1	CW	8E49H-BEL	393 018-1	8 S,H,4,5
	- 10	1-1/4:1	CW	10E55H-BEL	393 018-2	10 D,H,5
	- 12	1-1/2:1	CW	12H35H-BEL	393 018-2	12 D,H,5
PSVG	- 6	1-1/2:1	CW	6P39H-BEL	393 023-2	6 S,H,5
	- 8	1:1	CW	8P29H-BEL	393 018-1	8 S,H,4,5
	- 8	2:1	CW	8P49H-BEL	393 018-1	8 S,H,4,5
	- 10	1-1/4:1	CW	10P55H-BEL	393 018-2	10 D,H,5
	- 12	1-1/2:1	CW	12P35H-BEL	393 018-2	12 D,H,5
PVG	- 4	1:1	CW	4G29H-BEL	393 023-2	4 S,H,5
	- 6	1:1	CW	8B29H-BEL	393 018-1	6 S,H,1,5
	- 8	1:1	CW	8B29H-BEL	393 018-1	8 S,H,5
SVG	- 6	1-1/2:1	CW	6B39H-BEL	393 023-2	6 S,H,5
	- 8	1:1	CW	8G29H-BEL	393 018-1	8 S,H,4,5
	- 8	2:1	CW	8G49H-BEL	393 018-1	8 S,H,4,5
	- 10	1-1/4:1	CW	10D55H-BEL	393 018-2	10 D,H,5
	- 12	1-1/2:1	CW	12A35H-BEL	393 018-2	12 D,H,5
XVG	- 2	1:1	CW	4G29H-BEL	393 023-2	2 S,H,1,5
	- 4	1:1	CW	4G29H-BEL	393 023-2	4 S,H,5
	- 6	1:1	CW	8B29H-BEL	393 018-1	6 S,H,1,5
	- 8	1:1	CW	8B29H-BEL	393 018-1	8 S,H,5

**ALTRONIC III  
MEDIUM ENGINES, 2-16 CYLINDERS**

**APPLICATION LIST  
FORM AIII AL 12-95**

ENGINE / MODEL NO.	DRIVE RATIO	ROTA-TION	ALTRONIC III UNIT NO.	WIRING HARNESS	QTY. COILS	NOTES
<b>M.E.P.</b>						
M.E.P.	- 6	1:1	CW	6A17XS-A	393 013-5	12 S,7
	- 6	3:1	CCW	6A37S-A	393 013-5	12 S,7
(2 units)	- 6	3:1	CCW	6A39H-A	393 013-5	12 S,H,22
	- 8	1:1	CW	8A12XS-A	393 014-5	16 S,7
	- 8	2:1	CCW	8A27S-A	393 014-5	16 S,7
(2 units)	- 8	2:1	CCW	8A23H-A	393 014-5	16 D,H,22
	- 10	1:1	CW	10A11XS-A	393 014-6	20 D,7
	- 10	2-1/2:1	CCW	10A51S-A	393 014-6	20 D,7
(2 units)	- 10	2-1/2:1	CCW	10A53H-A	393 014-6	20 D,H,22
	- 12	1:1	CW	12A11XS-A	393 014-6	24 D,7
	- 12	3:1	CCW	12A31S-A	393 014-6	24 D,7
(2 units)	- 12	3:1	CCW	12A33H-A	393 014-6	24 D,H,22

**ROILINE**

D-1000	1:1	CCW/CW	4A29H-A	393 023-1	4	S,H
F-1500	1-1/2:1	CCW/CW	6A39H-G	393 023-1	6	S,H
F-1850	1-1/2:1	CCW/CW	6A39H-A	393 023-1	6	S,H
H-540	1:1	CCW/CW	8A23H-A	393 018-1	8	D,H,17
H-570	1:1	CCW/CW	8A23H-A	393 018-1	8	D,H,17
H-844	1:1	CCW/CW	8A23H-A	393 018-1	8	D,H,17
H-884	1:1	CCW/CW	8A23H-A	393 018-1	8	D,H,17
H-2000 (flange mount)	1:1	CW	8B25H-G	393 018-1	8	D,H,1
H-2000 (base mount)	1:1	CW	8B25H-BEL	393 018-1	8	D,H,1
H-2470	1:1	CW	8B25H-A	393 018-1	8	D,H
L-3000 (flange mount)	1-1/2:1	CW	12A33H-G	393 018-2	12	D,H
L-3000 (base mount)	1-1/2:1	CW	12A33H-BEL	393 018-2	12	D,H
L-3230	1-1/2:1	CW	12A33H-A	393 018-2	12	D,H
L-3460	1-1/2:1	CW	12H35H-A	393 018-2	24	D,H,1
L-4000	1-1/2:1	CW	12H35H-A	393 018-2	24	D,H,1
RXISV (flange mount)	1-1/2:1	CW	12A33H-G	393 018-2	12	D,H
RXISV (base mount)	1-1/2:1	CW	12A33H-BEL	393 018-2	12	D,H
RXIV (flange mount)	1:1	CW	8B25H-G	393 018-1	8	D,H

**RUSTON**

12RK270G	2:1	CW	12C45HT-BEL	393 018-2	12	D,H,T
----------	-----	----	-------------	-----------	----	-------

**ALTRONIC III  
MEDIUM ENGINES, 2-16 CYLINDERS**

**APPLICATION LIST  
FORM AIII AL 12-95**

ENGINE / MODEL NO.	DRIVE RATIO	ROTA-TION	ALTRONIC III UNIT NO.	WIRING HARNESS	QTY. COILS	NOTES
<b>SUPERIOR (White Superior)</b>						
6G-510	1-1/2:1	CCW	6A39H-BEL	393 023-2	6	S,H
6GT-510	1-1/2:1	CCW	6A39H-BEL	393 023-2	6	S,H
6G-825	1-1/2:1	CCW	6A39H-BEL	393 023-2	6	S,H
6GT-825	1-1/2:1	CCW	6A39H-BEL	393 023-2	6	S,H
6GTL	1-1/2:1	CCW	6A39H-BEL	393 023-2	6	S,H
6GTLA	1-1/2:1	CCW	6A39HT-BEL	393 013-4	6	S,H,T
6GTLB	1-1/2:1	CCW	6A39HT-BEL	393 013-4	6	S,H,T
8G-825	1:1	CCW	8A29H-BEL	393 018-1	8	S,H,19
8GT-825	1:1	CCW	8A29H-BEL	393 018-1	8	S,H,19
8GTL	1:1	CCW	8A29H-BEL	393 018-1	8	S,H
8GTLA	1:1	CCW	8A29HT-BEL	393 014-3	8	S,H,T
8GTLB	1:1	CCW	8A29HT-BEL	393 014-3	8	S,H,T
8SGTB	1:1	CW	8A29HT-GL	393 014-3	8	S,H,T
12G-825	1-1/2:1	CCW	12D35H-BEL	393 018-2	12	D,H
12GT-825	1-1/2:1	CCW	12D35H-BEL	393 018-2	12	D,H
12GTL	1-1/2:1	CCW	12D35H-BEL	393 018-2	12	D,H
12GTLA	1-1/2:1	CCW	12D35HT-BEL	393 014-4	12	D,H,T
12GTLB	1-1/2:1	CCW	12D35HT-BEL	393 014-4	12	D,H,T
12SGT	1-1/2:1	CCW	12D35H-BEL	393 018-2	12	D,H
12SGTA	1-1/2:1	CCW	12D35HT-BEL	393 014-4	12	D,H,T
12SGTB	1-1/2:1	CCW	12D35HT-BEL	393 014-4	12	D,H,T
16G-825	1:1	CCW	16G23H-BEL	393 022-1	16	D,H,13
16G-825 (2 units)	1:1	CCW	8A29H-BEL	393 018-1	16	S,H,22
16GT-825	1:1	CCW	16G23H-BEL	393 022-1	16	D,H
16GT-825 (2 units)	1:1	CCW	8A29H-BEL	393 018-1	16	S,H,22
16GTL	1:1	CCW	16G23H-BEL	393 022-1	16	D,H,13
16GTL (2 units)	1:1	CCW	8A29H-BEL	393 018-1	16	S,H,22
16GTLA	1-1/2:1	CCW	16G33HT-BEL	393 021-2	16	D,H,T,11
16GTLA	1-1/2:1	CCW	8L63H-BEL	393 014-7	16	D,H,11
16GTLB	1-1/2:1	CCW	16G33HT-BEL	393 021-2	16	D,H,T
16SGT	1:1	CCW	16G23H-BEL	393 022-1	16	D,H,13
16SGT (2 units)	1:1	CCW	8A29H-BEL	393 018-1	16	S,H,22
16SGTA	1-1/2:1	CCW	16G33HT-BEL	393 021-2	16	D,H,T,11
16SGTA	1-1/2:1	CCW	8L63H-BEL	393 014-7	16	D,H,11
16SGTB	1-1/2:1	CCW	16G33HT-BEL	393 021-2	16	D,H,T

**ALTRONIC III  
MEDIUM ENGINES, 2-16 CYLINDERS**

**APPLICATION LIST  
FORM AIII AL 12-95**

ENGINE / MODEL NO.	DRIVE RATIO	ROTA-TION	ALTRONIC III UNIT NO.	WIRING HARNESS	QTY. COILS	NOTES
<b>THOMASSEN</b>						
8NC	1:1	CW	8B29H-BEL	393 018-1	8	S,H,21
12NC	1-1/2:1	CW	12A35H-BEL	393 018-2	12	D,H,21
<b>WAUKESHA</b>						
6LRO Series	1-1/2:1	CW	6A39H-BEL	393 023-2	6	S,H,8,10
6LRZ Series	1-1/2:1	CW	6A39H-BEL	393 023-2	6	S,H,8,10
6NKR Series	1-1/2:1	CW	6A39H-BEL	393 023-2	6	S,H,10
6WAK Series	1-1/2:1	CW	6A39H-BEL	393 023-2	6	S,H,10,18
8L-AT25GL	1-1/2:1	CCW	8A39H-G	393 018-1	8	S,H
12V-AT25GL	1-1/2:1	CCW	12K33H-G	393 018-2	12	D,H
16V-AT25GL	1-1/2:1	CCW	16K33H-G	393 022-1	16	D,H
F18G, F18GL	1:1	CW	6A29H-GV	393 023-2	6	S,H
F18G, F18GL	1:1	CW	6A29H-GVN	393 023-2	6	S,H,23
F1197G	1-1/2:1	CW	6A39H-BEL	393 023-2	6	S,H,10,18
F1905G	1-1/2:1	CW	6A39H-BEL	393 023-2	6	S,H,10
F2894G, GSI	1-1/2:1	CW	6A39H-BEL	393 023-2	6	S,H,8,10
F2895G, GSI (flange)	1-1/2:1	CCW	6A39H-G	393 023-2	6	S,H
F2895G, GSI (base)	1-1/2:1	CCW	6A39H-BEL	393 023-2	6	S,H,9,10
F2895GL	1-1/2:1	CCW	6A39H-G	393 023-2	6	S,H
F3520G, GSI	1-1/2:1	CW	6A39H-BEL	393 023-2	6	S,H,8,10
F3521G, GSI (flange)	1-1/2:1	CCW	6A39H-G	393 023-2	6	S,H
F3521G, GSI (base)	1-1/2:1	CCW	6A39H-BEL	393 023-2	6	S,H,9,10
F3521GL	1-1/2:1	CCW	6A39H-G	393 023-2	6	S,H
H24G, H24GL	1:1	CW	8A23H-GV	393 018-1	8	D,H
H24G, H24GL	1:1	CW	8A23H-GVN	393 018-1	8	D,H,23
H1077G	1:1	CW	8B25H-G	393 018-1	8	D,H,20
H2475G	1:1	CW	8B25H-A	393 018-1	8	D,H
H2476G	1:1	CW	8B25H-A	393 018-1	8	D,H
L36G, L36GL	1-1/2:1	CW	12A33H-GN	393 018-2	12	D,H,23
L1616G	1-1/2:1	CCW/CW	12A33H-G	393 018-2	12	D,H
L3711G	1-1/2:1	CW	12A33H-A	393 018-2	12	D,H
L3712G	1-1/2:1	CW	12A33H-A	393 018-2	12	D,H
L5100G, GSI	1-1/2:1	CCW	12A33H-BEL	393 018-2	12	D,H,10
L5108G, GSI (flange)	1-1/2:1	CCW	12A33H-G	393 018-2	12	D,H
L5108G, GSI (base)	1-1/2:1	CCW	12A33H-BEL	393 018-2	12	D,H,10
L5108GL	1-1/2:1	CCW	12A33H-G	393 018-2	12	D,H

WAUKESHA LISTING CONTINUED ON NEXT PAGE



**ALTRONIC III  
MEDIUM ENGINES, 2-16 CYLINDERS**

**APPLICATION LIST  
FORM AIII AL 12-95**

ENGINE / MODEL NO.	DRIVE RATIO	ROTA-TION	ALTRONIC III UNIT NO.	WIRING HARNESS	QTY. COILS	NOTES
<b>WAUKESHA (CONTINUED)</b>						
L5788G, GSI	1-1/2:1	CCW	12A33H-BEL	393 018-2	12	D,H,10
L5790G, GSI (flange)	1-1/2:1	CCW	12A33H-G	393 018-2	12	D,H
L5790G, GSI (base)	1-1/2:1	CCW	12A33H-BEL	393 018-2	12	D,H,10
L5790GL	1-1/2:1	CCW	12A33H-G	393 018-2	12	D,H
L7040G, GSI	1-1/2:1	CCW	12A33H-BEL	393 018-2	12	D,H,10
L7042G, GSI (flange)	1-1/2:1	CCW	12A33H-G	393 018-2	12	D,H
L7042G, GSI (base)	1-1/2:1	CCW	12A33H-BEL	393 018-2	12	D,H,10
L7042GL	1-1/2:1	CCW	12A33H-G	393 018-2	12	D,H
P48G, P48GL	1-1/2:1	CW	16T31H-GN	393 022-1	16	D,H,23
P9390G, GSI (flange)	1:1	CW	16T21H-GV	393 022-1	16	D,H,11
P9390G, GSI (flange)	1:1	CW	8B13H-A	393 018-1	16	D,H,11
P9390G, GSI (flange-2 units)	1:1	CW	8A25H-GV	393 018-1	16	D,H,22
P9390G, GSI (base)	1:1	CW	16T21H-BEL	393 022-1	16	D,H,11
P9390G, GSI (base)	1:1	CW	8B13H-BEL	393 018-1	16	D,H,11
P9390G, GSI (base-2 units)	1:1	CW	8A25H-BEL	393 018-1	16	D,H,22
P9390GL	1:1	CW	16T21H-GV	393 022-1	16	D,H
VLRO Series	1-1/2:1	CCW	12A33H-BEL	393 018-2	12	D,H,10

**WORTHINGTON**

BBG	- 4	2:1	CCW/CW	4A29H-BEL	393 023-2	4	S,H
	- 5	2-1/2:1	CCW/CW	5A59H-BEL	393 023-2	5	S,H
	- 6	3:1	CCW/CW	6A39H-BEL	393 023-2	6	S,H
CCG	- 4	2:1	CCW/CW	4A29H-BEL	393 023-2	4	S,H
	- 5	2-1/2:1	CCW/CW	5A59H-BEL	393 023-2	5	S,H
	- 6	3:1	CCW/CW	6A39H-BEL	393 023-2	6	S,H
DDG	- 4	2:1	CCW/CW	4A29H-BEL	393 023-2	4	S,H
	- 5	2-1/2:1	CCW/CW	5A59H-BEL	393 023-2	5	S,H
	- 6	3:1	CCW/CW	6A39H-BEL	393 023-2	6	S,H
EEG	- 4	2:1	CCW/CW	4A29H-BEL	393 023-2	4	S,H
	- 5	2-1/2:1	CCW/CW	5A59H-BEL	393 023-2	5	S,H
	- 6	3:1	CCW/CW	6A39H-BEL	393 023-2	6	S,H
LTC	- 3	3:1	CCW/CW	6A39H-BEL	393 023-2	6	S,H,3,12,16
	- 4	2:1	CCW/CW	4A29H-BEL	393 023-2	8	S,H,3,16
	- 5	2-1/2:1	CCW/CW	5A59H-BEL	393 023-2	10	S,H,3,16
	- 6	3:1	CCW/CW	6A39H-BEL	393 023-2	12	S,H,3,16
	- 8	2:1	CCW/CW	8A29H-BEL	393 018-1	16	S,H,3,16
TTDA 8-Cylinder		1-1/2:1	CCW/CW	8A39H-G	393 018-1	16	S,H,15

**NOTES:**

- S - Single storage capacitor unit.
- D - Dual storage capacitor unit.
- H - High output unit (standard).
- T - Unit has provision for variable electronic timing.
- 1 - Installation requires special wiring instructions; see Installation Instructions, form AIII II.
- 2 - Use unit 8B25H (timed to #8 cyl.) for replacement of same units. Unit 8T25H (timed to #1 cyl.) is used on OEM installations and is recommended for new field retrofit applications.
- 3 - Altronic III is recommended for Clark, Cooper Bessemer and Worthington 2-cycle engines on normally aspirated or blower-type (supercharged) models only. Turbocharged engines should use the Altronic II/II-CPU ignition system - see form All AL or All AL-CPU.
- 4 - Check engine for correct drive ratio. Engines with two 4- cylinder magnetos and interval timer have 2:1 ratio. Engines with two 8-cylinder magnetos have 1:1 ratio.
- 5 - Installation requires 510 221 shaft extension for each Altronic III unit.
- 6 - Check engine magneto drive ratio. For 3:1 ratio, use unit 6x39H. For 1-1/2:1 ratio, use unit 6x69H.
- 7 - Special extra-high output unit designated by "S" suffix in Altronic III part number. Example: 8A27S-A.
- 8 - When mounting to the lower magneto drive, use Waukesha bracket #12062. With water pump shaft diameter of 1.120", use Waukesha extension #B2932; with water pump shaft diameter of .965", use extension #B2932A.
- 9 - Magneto mounting bracket (Waukesha #153290) and cover should be rotated 30 degrees away from engine block to allow Altronic III unit to fit.
- 10 - Order appropriate Altronic drive hub as follows:
  - 510 658 for 5/8" diameter engine drive shaft (12-cyl. engines);
  - 510 551 for 3/4" diameter engine drive shaft (6-cyl. engines).
- 11 - 8-cylinder unit listed fires two cylinders simultaneously (one on exhaust stroke). 16-cylinder unit listed has 16 separate outputs and is recommended for new installations.
- 12 - Use harness leads A, C, E and connect according to engine firing order.
- 13 - Newer engines with factory installation of 16-cylinder unit have 1-1/2:1 drive ratio and Altronic III unit no. 16G33HT-BEL.
- 14 - 6-cylinder unit listed fires two cylinders simultaneously (one on exhaust stroke). 12-cylinder unit listed has 12 separate outputs and is recommended for new installations.
- 15 - Drive must be provided at 1-1/2 times engine speed; complete kit available from K.C. Diesel & Electric; 2810 Nicholson; Kansas City, Kansas 64120.
- 16 - Long spark-duration ignition coils 591 010 or 591 010-S are recommended for this application.
- 17 - Engine must be equipped with Rolline drive #1-DO810726 (old no. 4A-81601).
- 18 - Requires re-location of oil by-pass; request Waukesha drawing #SB-4868-30 for details.
- 19 - When replacing Mag-tronic MTC-8-1310 (magneto drive ratio of 1-1/2:1), use unit 8A39H-BEL (3:1 internal gears).
- 20 - When replacing Mag-tronic MTC-8-x320 (magneto drive ratio of 1-1/2:1), use unit 8B35H-G (3:1 internal gears).
- 21 - Mounting must be modified to a standard 45mm base mount drive.
- 22 - Two Altronic III units and two harnesses required for this application.
- 23 - Units -GN and -GVN use special gear-flex coupling; replacement coupling assembly is 560 009.
- 24 - Engines with S/N 37Y2112 and lower use unit 4A29H-A; engines with S/N 37Y2113 and higher use unit 4A39H-A.

**ELECTRONIC TIMING OPTION**

- A) ALTRONIC III UNIT - Add "T" to unit part number. EXAMPLE: 6A39HT-A.
- B) ELECTRONIC TIMING UNIT - One per system:
  - 381 601-xA Electronic Timing Unit, dual timing setting; allows for two timing points to be set for dual-gas or dual-load applications. Timing range is 20 degrees, 4-cycle or 10 degrees, 2-cycle. See listing below.
  - 381 610-x Electronic Timing Unit, custom timing curve vs. RPM
  - 381 650-1 Altronic III-CPU Control Unit, see III-CPU section.
- C) HARNESS - One per system:
  - 593 042 Harness, unshielded, 180 inch leads
  - 593 049 Harness, unshielded, 48 inch leads with spiral wrap overlay and terminated with 1/2"-14 NPT termination fitting
  - 593 043-x\* Harness, shielded, with straight connector, stainless steel conduit and 1/2"-14 NPT termination fitting
  - 593 047-x\* Harness, shielded, with right-angle connector, stainless steel conduit and 1/2"-14 NPT termination fitting
  - \* NOTE: x = 12", 18", 24", 36" conduit length
- D) SHORTING PLUG - To operate Altronic III as a standard, fixed timing unit:
  - 593 045 Shorting plug

ALTRONIC III UNIT	TIMING UNIT
4A29HT	381 601-1A
5A59HT	381 601-1A
6A17HT	381 601-3A
6A17XST	381 601-1A
6A29HT	381 601-2A
6A37ST	381 601-1A
6A39HT	381 601-1A
6B36HT	381 601-3A
6B39H	Order 6B36HT
8A11HT	381 601-3A
8A12XST	381 601-1A
8A23HT	381 601-1A
8A25HT	381 601-1A
8A27ST	381 601-1A
8A29HT	381 601-1A
8A39HT	381 601-2A
8B25HT	381 601-1A
8B29H	Order 8B25HT

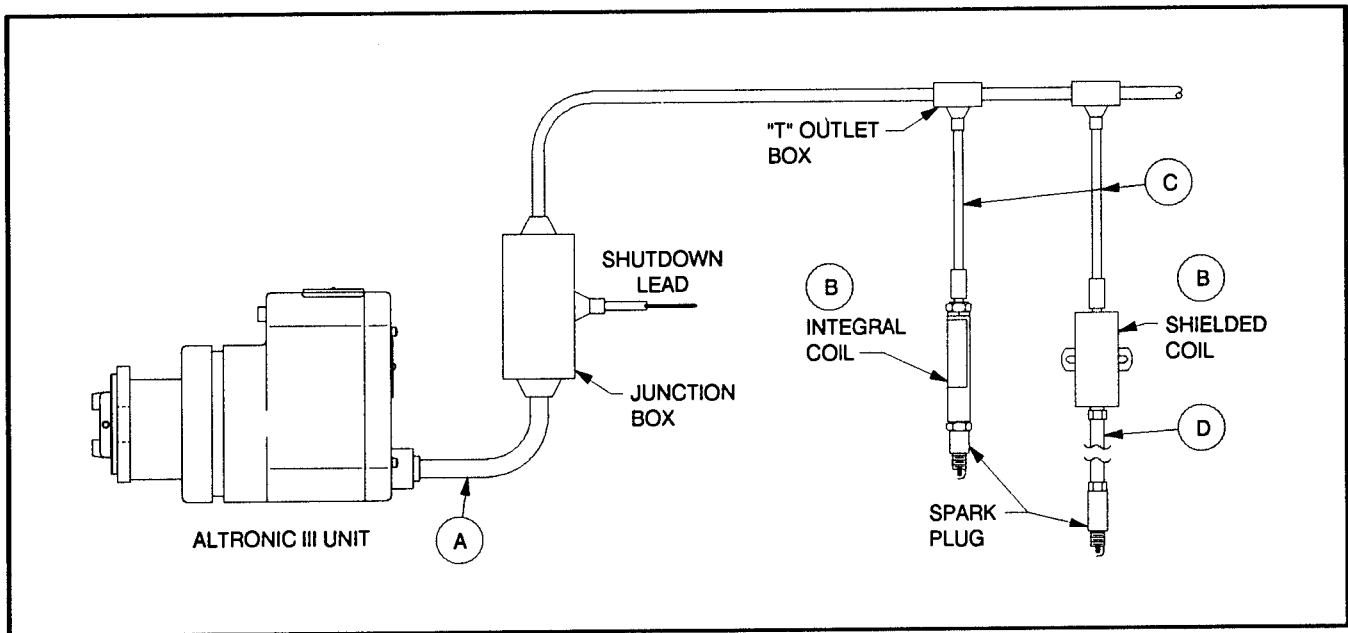
ALTRONIC III UNIT	TIMING UNIT
8C25HT	381 601-1A
8F25HT	381 601-1A
8T25HT	381 601-1A
10A11HT	381 601-1A
10A11XST	381 601-1A
10A51ST	381 601-1A
10A53HT	381 601-1A
10D55HT	381 601-1A
10E55HT	381 601-1A
10H11HT	381 601-1A
10P55HT	381 601-1A
10T53HT	381 601-1A
12A11XST	381 601-1A
12A21HT	381 601-2A
12A23HT	381 601-2A
12A31ST	381 601-2A
12A33HT	381 601-2A
12A35HT	381 601-2A

ALTRONIC III UNIT	TIMING UNIT
12B11HT	381 601-2A
12D35HT	381 601-2A
12E23HT	381 601-2A
12E53HT	381 601-2A
12F33HT	381 601-2A
12H35HT	381 601-2A
12K33HT	381 601-2A
12P21HT	381 601-1A
12P35HT	381 601-2A
12T23HT	381 601-2A
12T33HT	381 601-2A
12Z21HT	381 601-2A
16B21HT	381 601-2A
16G23HT	381 601-2A
16G33HT	381 601-2A
16K33HT	381 601-2A
16T21HT	381 601-2A

**SHIELDED SYSTEM**

- A) SHIELDED HARNESS - Altronic III unit to junction box:
  - 393 013 series - 90° connector for 4-6 cylinder units
  - 393 014 series - 90° connector for 8-12 cylinder units
  - 393 021 series - 90° connector for 16 cylinder units
  - See Identification section for complete listing.
- B) IGNITION COILS - See Application Guide, form AIS AG:
  - 501 061-S series - shielded coil, standard
  - 591 010-S series - shielded coil, long duration
  - 591 007 series - integral coil, 1"-20 male thread
  - 591 011A series - integral coil, 13/16"-20 female thread
  - 591 011B series - integral coil, 13/16"-20 female thread
- C) SHIELDED PRIMARY CABLE ASSEMBLIES - coil to junction box:
  - 593 022 series - 180° connector
  - 593 027 series - 90° connector
  - See Application Guide, form AISAG, for available lengths.
- D) SHIELDED SPARK PLUG LEAD ASSEMBLIES (FOR 501 061-S COIL):
  - 593 020 - 10", 13", 16", 18" - 1" spark plug connector
  - 593 030 - 10", 13", 16", 18" - 2" spark plug connector

NOTE: Components listed above are CSA Certified / FMR Approved for Class I, Group D, Division 2 locations.

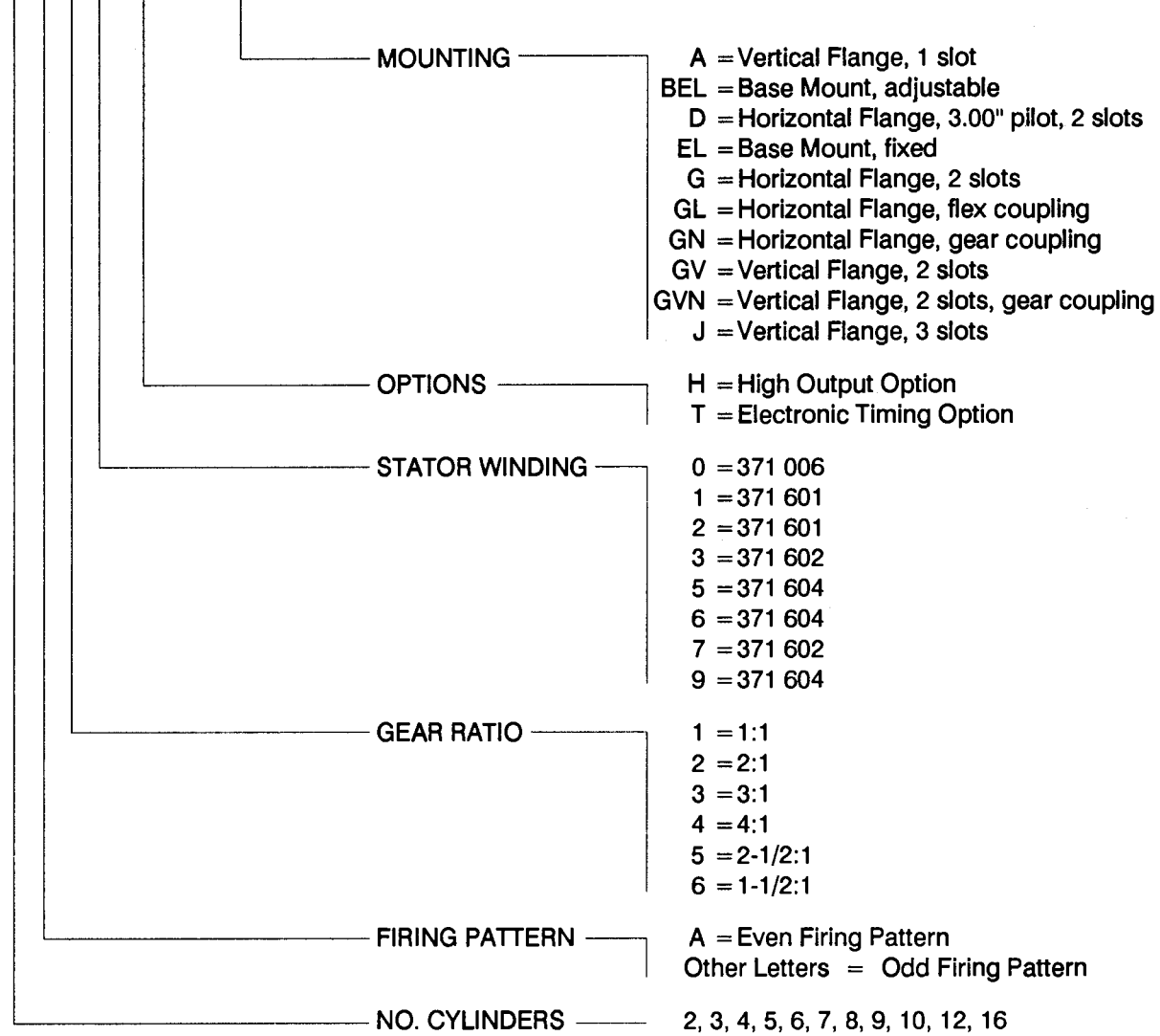


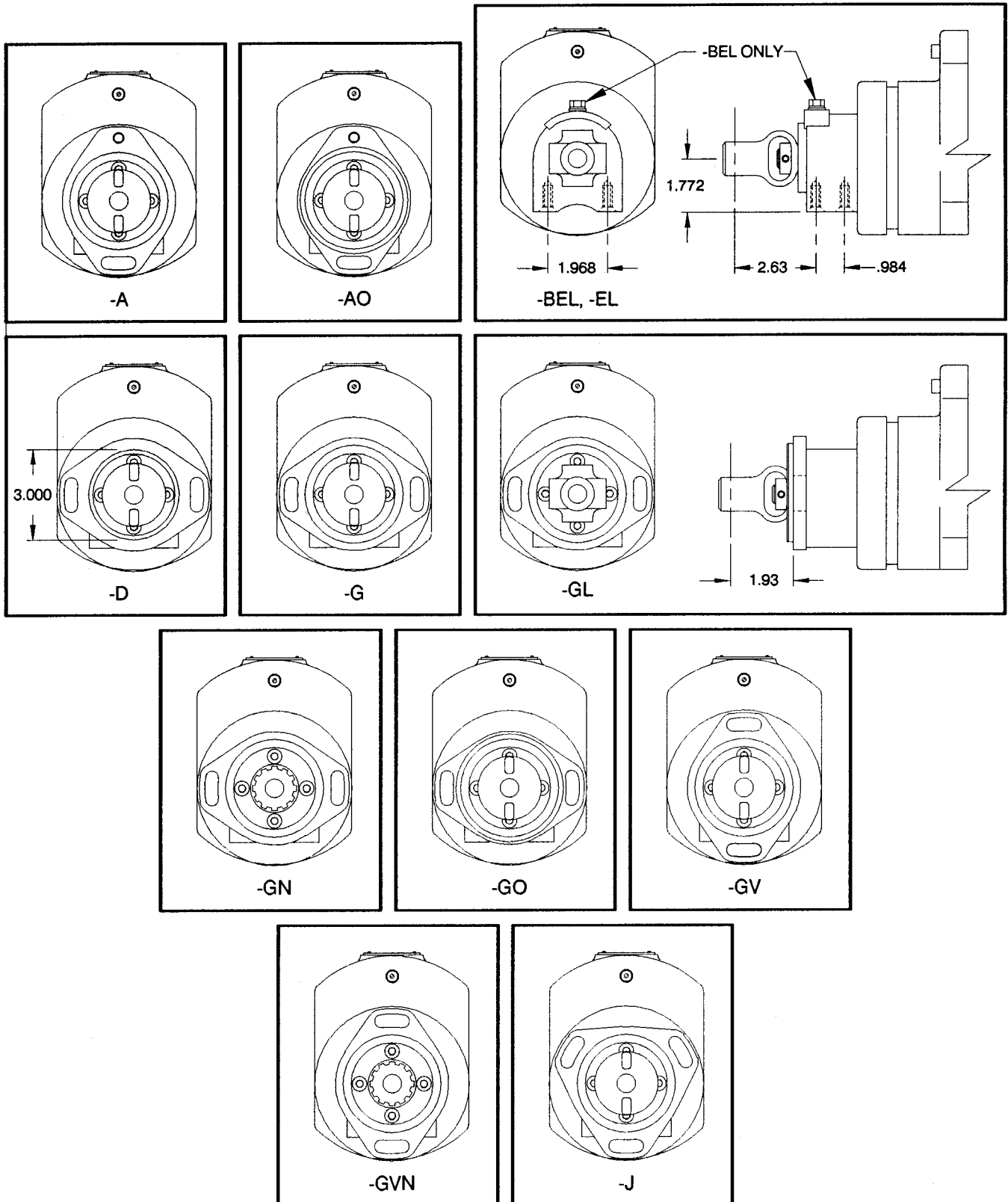
**ALTRONIC III  
MEDIUM ENGINES, 2-16 CYLINDERS**

**IDENTIFICATION  
FORM AIII AL 12-95**

**ALTRONIC III UNIT PART NO. DESIGNATION**

8 A 2 9 H T - B E L





**ALTRONIC III  
MEDIUM ENGINES, 2-16 CYLINDERS**

**IDENTIFICATION  
FORM AIII AL 12-95**

**BACK COVER LISTING**

UNIT	BACK COVER
2A19H	381 801-10H
2A29H	381 801-0H
3A29H	381 801-4H
4A29H	381 801-1H
4A49H	381 801-14H
4F29H	381 801-2H
4G29H	381 801-3H
5A59H	381 805-1H
6A17H	381 802-11H
6A17XS	381 802-11S
6A29H	381 802-2H
6A37S	381 802-1S
6A39H	381 802-1H
6A69H	381 802-7H
6B39H	381 802-3H
6C39H	381 802-6H
6F39H	381 802-4H
6F69H	381 802-8H
6Z13H	381 807-4H
8A11H	381 803-13H
8A12XS	381 803-21S
8A23H	381 803-5H
8A25H	381 803-5H
8A27S	381 803-1S
8A29H	381 803-1H

UNIT	BACK COVER
8A37H	381 803-9H
8A39H	381 803-9H
8B13H	381 803-14H
8B25H	381 803-6H
8B29H	381 803-3H
8B35H	381 803-22H
8C25H	381 803-7H
8E29H	381 803-12H
8E49H	381 803-124H
8F25H	381 803-10H
8G29H	381 803-4H
8G49H	381 803-44H
8H29H	381 803-8H
8L63H	381 803-16H
8P29H	381 803-11H
8P49H	381 803-114H
8T25H	381 803-20H
10A11H	381 806-2H
10A11XS	381 806-2S
10A51S	381 806-3S
10A53H	381 806-3H
10D55H	381 814-1H
10E55H	381 814-2H
10H11H	381 806-5H
10P55H	381 814-3H

UNIT	BACK COVER
10T53H	381 814-4H
12A11XS	381 804-21S
12A21H	381 804-2H
12A23H	381 804-2H
12A31S	381 804-6S
12A33H	381 804-6H
12A35H	381 804-6H
12B11H	381 812-51H
12D35H	381 804-7H
12E23H	381 812-2H
12E53H	381 812-3H
12H35H	381 804-9H
12K33H	381 804-14H
12P21H	381 804-11H
12P35H	381 804-10H
12T23H	381 812-9H
12T33H	381 812-10H
12Z21H	381 812-8H
16B21H	381 809-3H
16F21H	381 809-13H
16G23H	381 809-6H
16G33H	381 809-7H
16K33H	381 809-10H
16T21H	381 809-5H

**NOTE:** If unit has a "T" suffix, add "T" suffix to the back cover part no.  
**EXAMPLES -** For unit 6A39HT, order back cover 381 802-1HT.  
 For unit 16B21HT, order back cover 381 809-3HT.

**UNSHIELDED HARNESSSES**

<b>PART NO.</b>	<b>CONNECTOR / PINS</b>	<b>CYLS. / L1*</b>	<b>APPLICATION</b>	<b>NOTES</b>
393 011-1	90° / 7	6 / 72"	unshielded	
393 011-2	90° / 7	6 / 180"	unshielded	
393 012-8	90° / 14	8 / 180"	unshielded	
393 012-12	90° / 14	12 / 180"	unshielded	
393 018-1	180° / 14	8 / 180"	unshielded	b
393 018-2	180° / 14	12 / 180"	unshielded	b
393 020-1	90° / 17	16 / 180"	unshielded	
393 020-2	90° / 17	16 / 180"	unshielded	
393 022-1	180° / 17	16 / 180"	unshielded	b
393 022-2	180° / 17	16 / 180"	unshielded	b
393 023-1	180° / 7	6 / 72"	unshielded	b
393 023-2	180° / 7	6 / 180"	unshielded	b

**NOTES:**

b) All 180 degree connectors are potted type.

\* L1 = length of 16 ga. conductor



**SHIELDED HARNESSSES**

<b>PART NO.</b>	<b>CONNECTOR / PINS</b>	<b>CYLS. / L1* / L2*</b>	<b>APPLICATION</b>	<b>NOTES</b>
393 013-1	90° / 7	6 / 72" / 48"	shielded	a
393 013-2	90° / 7	6 / 180" / 48"	shielded	a
393 013-3	90° / 7	3 / 72" / 48"	shielded	a
393 013-4	90° / 7	6 / 60" / 20"	shielded	a
393 013-5	90° / 7	6 / 300" / 120"	shielded	a
393 013-6	90° / 7	4 / 60" / 38"	shielded	a
393 013-7	90° / 7	6 / 60" / 48"	shielded	a
393 013-8	90° / 7	6 / 72" / 60"	shielded	a
393 013-9	90° / 7	4 / 240" / 48"	shielded	a
393 013-10	90° / 7	2 / 72" / 38"	shielded	a
393 014-1	90° / 14	8 / 180" / 48"	shielded	a
393 014-2	90° / 14	12 / 180" / 48"	shielded	a
393 014-3	90° / 14	8 / 42" / 20"	shielded	a
393 014-4	90° / 14	12 / 72" / 48"	shielded	a
393 014-5	90° / 14	8 / 300" / 120"	shielded	a
393 014-6	90° / 14	12 / 300" / 120"	shielded	a
393 014-7	90° / 14	8 / 72" / 48"	shielded	a
393 014-8	90° / 14	12 / 60" / 36"	shielded	a
393 014-9	90° / 14	12 / 96" / 66"	shielded	a
393 014-10	90° / 14	8 / 60" / 48"	shielded	a
393 014-11	90° / 14	8 / 60" / 36"	shielded	a
393 021-1	90° / 17	16 / 180" / 48"	shielded	a
393 021-2	90° / 17	16 / 60" / 48"	shielded	a

**NOTES:**

a) CSA Certified for Class I, Group D, Division 2 hazardous locations when used with applicable CSA Certified Altronic ignition unit and coils.

\* L1 = length of 16 ga. conductor  
L2 = length of conduit on shielded harnesses